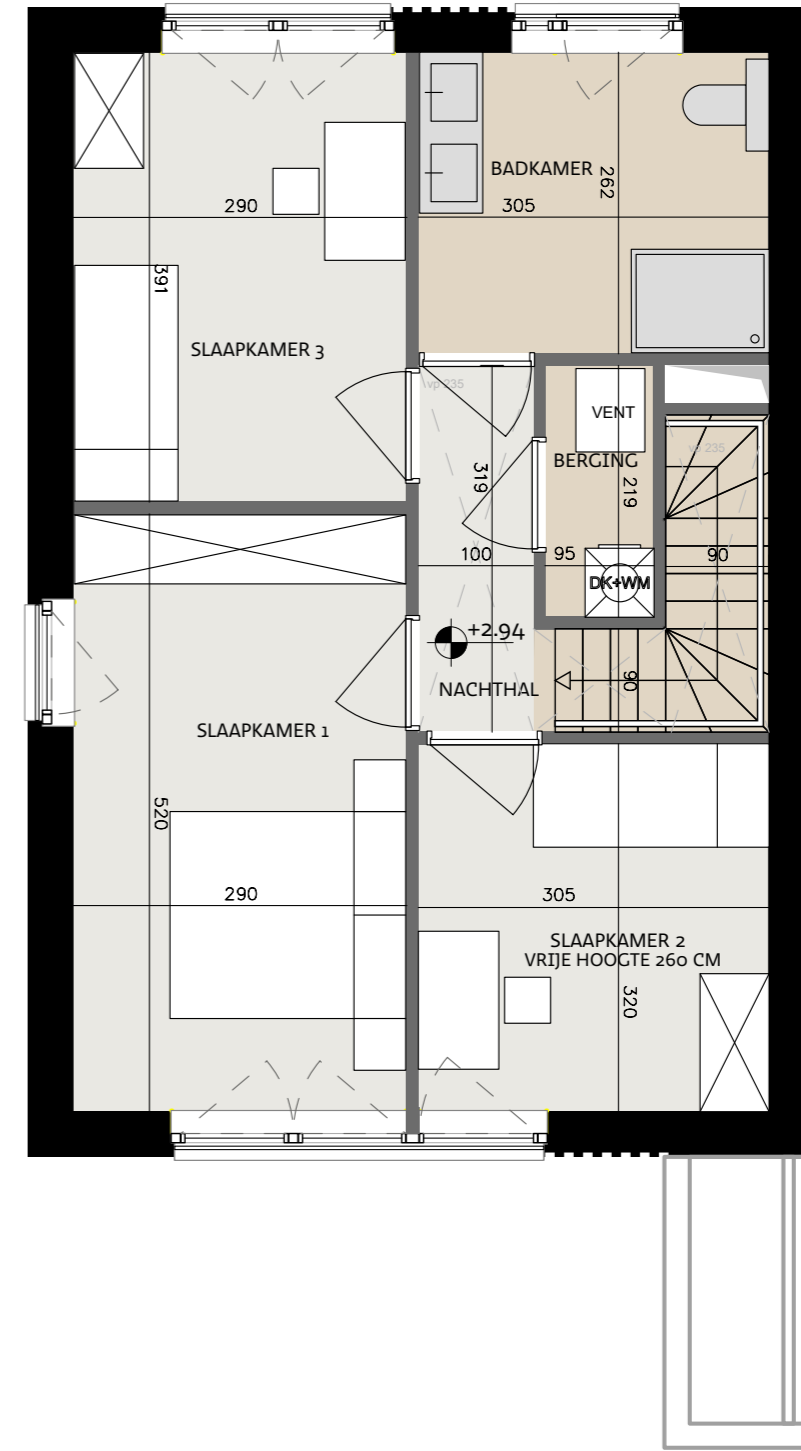
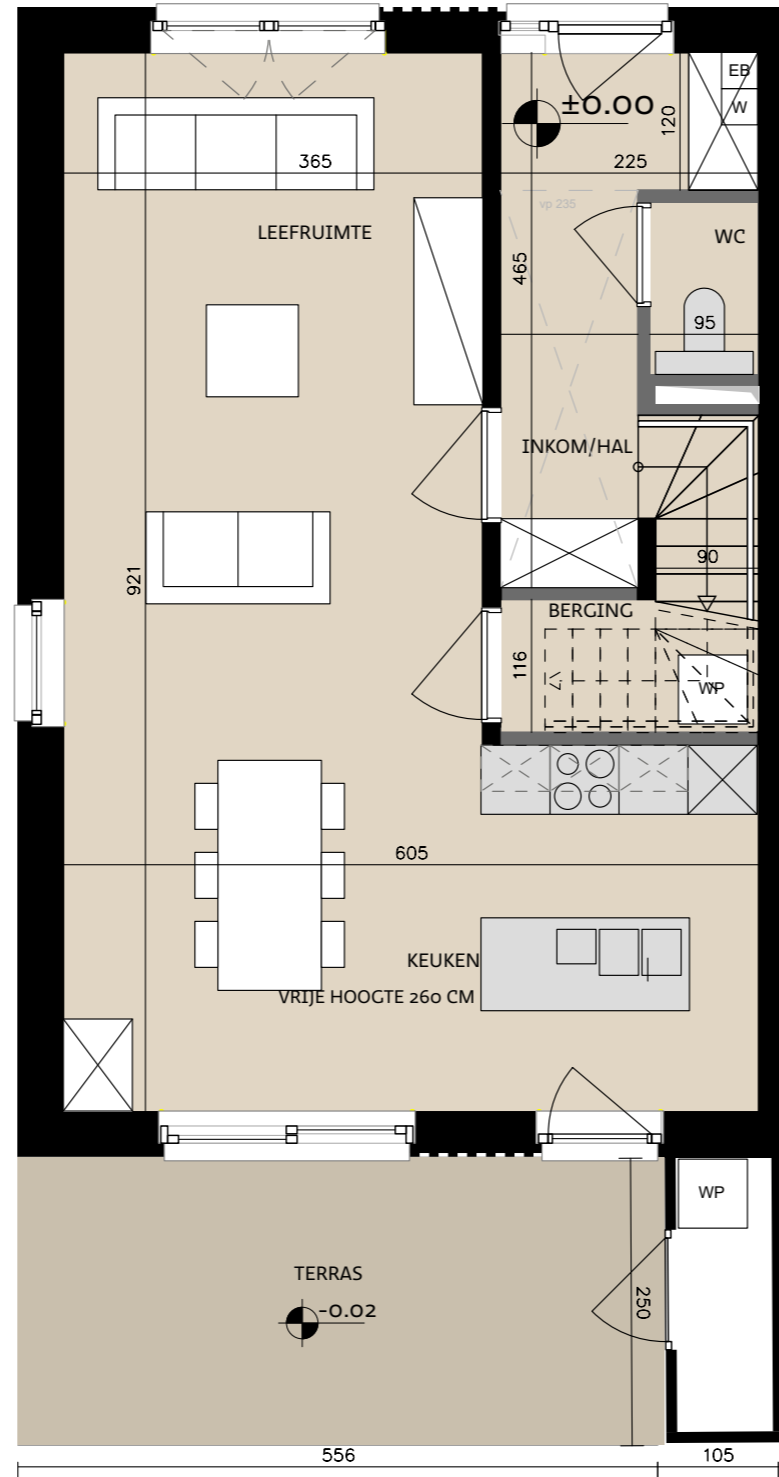


Woning nr. 27

Type A



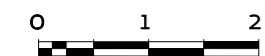
Datum:

Handtekening kopers:

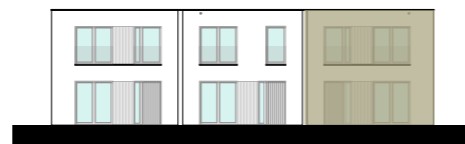


Tonkinstraat 27, 9700
Oudenaarde

Bruto oppervlakte 132,20 m²
Slaapkamers 3
Perceel 264,37 m²



Vooraanzicht



Situeringsplan



Projectontwikkelaar
steenoven



ALHEEMBOUW

Kwadestraat 149a bus 3.1
8800 Roeselare

Architect

WES

Edmond Blockstraat 9
9050 Gentbrugge